

0.9mm SC Connector

Features

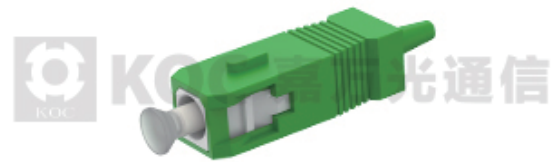
- Cone Ferrule type and Step Ferrule type available
- Free-floating ceramic ferrule
- Low insertion loss and back reflection loss
- Precision anti-rotation key and corrosion resistant body

Application

- CATV
- Metro
- Test equipment
- Premise installations
- Data processing networks
- Telecommunication networks
- Local Area Networks (LANs)
- Wide Area Networks (WANs)
- Active device termination

Standards

All components of/and the final product are designed and tested to conform the requirements of IEC 60874, Bellcore/Telcordia GR-326, EIA/TIA 604-3A, IEC61754-4, EIA/TIA 568, IEC61300-2, IEC61300-3, IEC61753-1, EIA/TIA455.



Item	Single mode	Multi mode
Insertion Loss	≤0.3dB	≤0.3dB
Return Loss	APC≥60dB, PC≥50dB	PC≥30dB
Durability	≤0.2dB typical change, 1000 matings	≤0.2dB typical change, 1000 matings
Operating Temperature	-40°C ~ 85°C	-40°C ~ 85°C
Ferrule Hole Sizes	SM:125.0+1/-0μm, Concentricity: ≤1.0μm	
	SM:125.3+1/-0μm, Concentricity: ≤1.0μm	
	SM:125.5+1/-0μm, Concentricity: ≤1.0μm	
	MM:127.0+1/-0μm, Concentricity: ≤4.0μm	

Availability

- The connector can be supplied as a pre-assembled connector or as connector kits.
- Clips are available for duplex connectors.
- PC or APC are available.



Cone Ferrule

Step Ferrule