

Specification

SC Duplex Adapter

Description

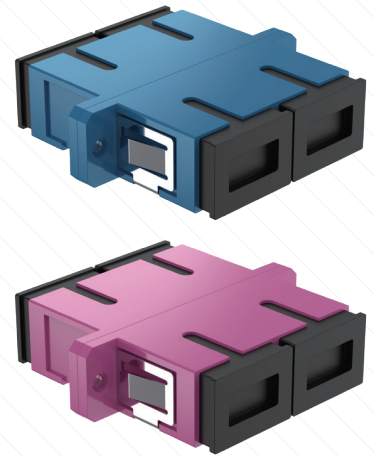
Fiber optic adapter is to achieve the same or different optical fiber connectors docking in optical links, make the light path connected under the small loss. It is to put the fiber of two surface precision docking, so that the optical output of light energy to the maximum coupling in the receiving optical fiber, and since it entered the optical link to minimize the effects on the system. Widely used in optical fiber distribution frame (ODF), fiber optic communications equipment, instruments, etc., superior performance, stable and reliable.

Application

- CATV
- Telecommunication networks
- Local Area Networks (LANs)
- Data processing networks
- Test equipment
- Premise installations
- Gigabit Ethernet
- Metro

Features

- Low insertion loss and back reflection loss
- High precision alignment
- Compact design
- With/Without flange
- Choice of housing material and sleeve material
- Telcordia, ANSI, TIA/EIA, NTT and JIS compliance

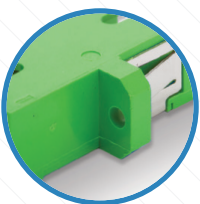


Specification

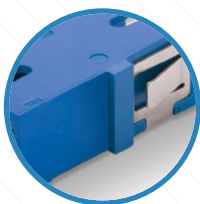
Item	Specification
Insertion Loss	<0.20dB
Durability	<0.20dB typical change, 1000 matings
Operating Temperature	-40 ~ 85°C(PBT) / -25 ~ 70°C(ABS)

Availability

Flange Type	Welded Type	Housing Color
Flange	One Piece Adapter	SM/PC - Blue
No Flange	Conventional Adapter	SM/APC - Green
		MM/PC - Beige/Aqua/Magenta/Black



With Flange



No Flange



SC One Piece Adapter
No Weld Type



SC Conventional Adapter
Welded Type